

SERIES SF CLEAN GAS FILTER

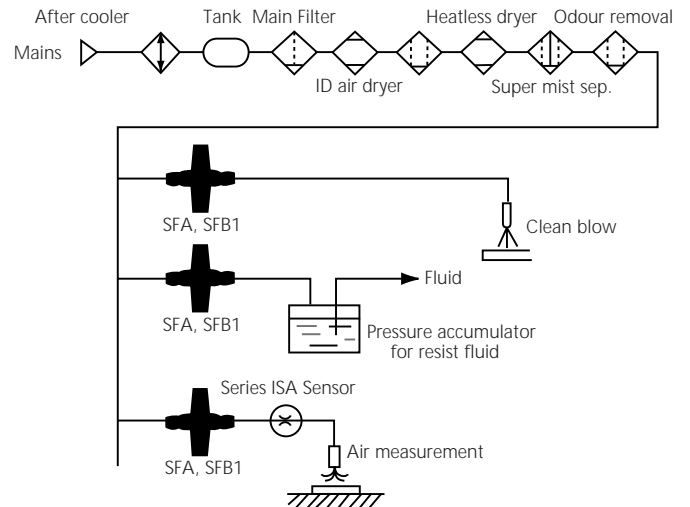
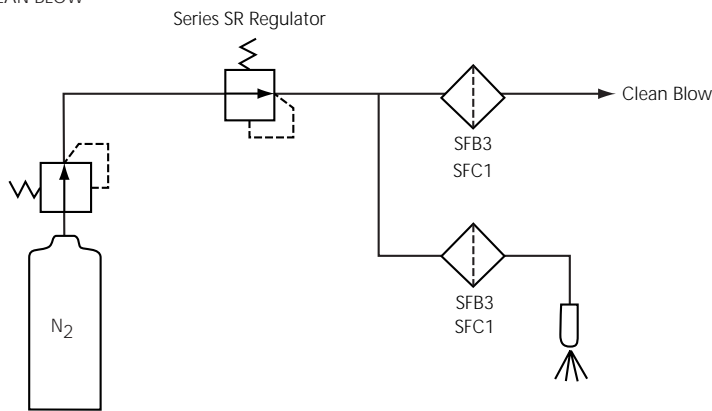
- ✓ Disposable or cartridge types
- ✓ Variety of joints connection
- ✓ Electropolished 316 Stainless Steel
- ✓ 100% Inspection by Helium leak test
- ✓ Clean room assembled
- ✓ Ultra-clean design for semiconductor industry



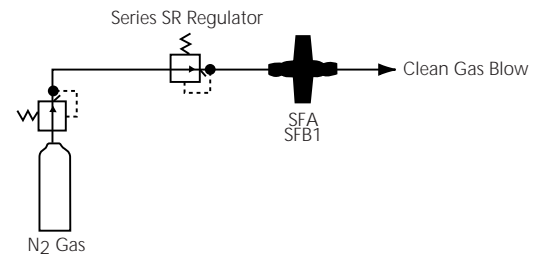
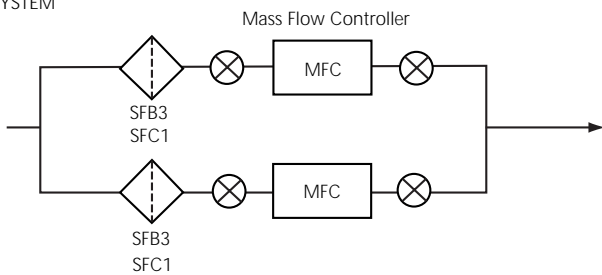
TYPICAL APPLICATION
DISPOSABLE TYPE

TYPICAL APPLICATION
CARTRIDGE TYPE

CLEAN BLOW



GAS SYSTEM



SEE INSIDE FRONT COVER FOR
DETAILS OF YOUR LOCAL SALES OFFICE



FOR FURTHER TECHNICAL
DETAILS ON THIS
PRODUCT CONTACT
YOUR NEAREST REGIONAL
CENTRE

SERIES SFA DISC TYPE FILTER

- ✓ Design facilitates quick change of element
- ✓ For general gas use
- ✓ PTFE membrane element
- ✓ 3 Body sizes



PRECAUTIONS

- Supplied in double wrapping. Outer wrapping may be opened in ordinary atmosphere, inner wrapping to be opened in the clean room.
- Confirm IN/OUT are fixed in the correct flow path. To fix in position, hold the filter body with a spanner on the flats provided and not the housing.
- Use 1/4" O.D (6.35mm) tubing
- Guaranteed 0.1µm. particle removal. If a new line is installed the customer should clean flush before use.
- When installing new element locate 'SMC' mark at 'IN' side to ensure correct flow.
- Do not handle element, use protective gloves and always change the element and packing together.
- Clamp recommended max. torque:
 - SFA100 20kgf/cm
 - SFA200 40kgf/cm
 - SFA300 60kgf/cm
- Developed for general gas use. Not suitable for hazardous gas use.



MODELS

Type	Port Size	Area of element (cm ²)	Element	Weight kgf
SFA100-02	Rc(PT)1/4	13.85	ED001S-X10V	0.34
SFA101-02	NPT1/4	13.85	ED001S-X10V	0.34
SFA200-02	Rc(PT)1/4	33.18	ED101S-X10V	0.44
SFA201-02	NPT1/4	33.18	ED101S-X10V	0.44
SFA300-02	Rc(PT)1/4	56.75	ED201S-X10V	0.66
SFA301-02	NPT1/4	56.75	ED201S-X10V	0.66
SFA102-02	TS11/4	13.85	ED001S-X10V	0.38
SFA202-02	Tube Swage Joint	33.18	ED101S-X10V	0.49
SFA302-02	Tube Swage Joint	56.75	ED201S-X10V	0.70
SFA103-02	UO11/4	13.85	ED001S-X10V	0.42
SFA203-02	Union O Ring Joint	33.18	ED101S-X10V	0.53
SFA303-02	Union O Ring Joint	56.75	ED201S-X10V	0.75



TECHNICAL SPECIFICATIONS

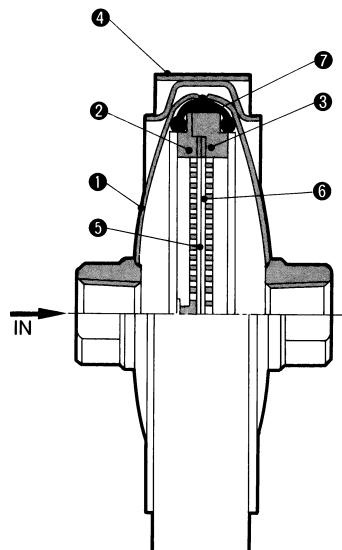
Operating Pressure	Max 9.9kgf/cm ² , 10 ⁻³ Torr
Max. Temp.	80°C
Element Differential Pressure Drop	Max1kgf/cm ²
Back Flush Pressure	Max 0.5kgf/cm ²
Filtration	0.01µm100%
Material:	Housing SUS316 Electropolished
	Element PTFE + Polyethylene
	Seal FPM



MATERIALS OF CONSTRUCTION

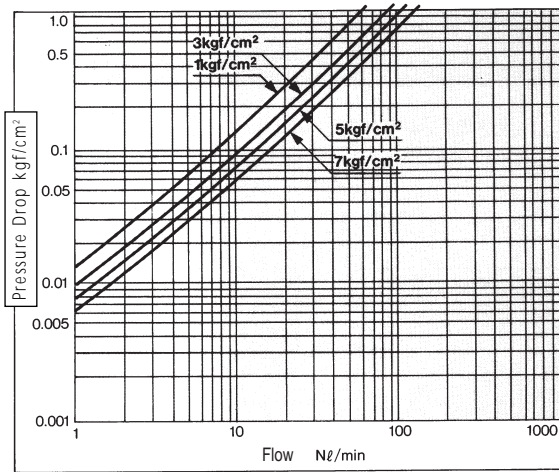


No.	Item	Material	Other
1	Case	SUS316	Electropolished
2	Holder 1	Polyester	
3	Holder 2	Polyester	
4	V.Clamp	SS304	
5	Element	PTFE	
6	Packing	FPM	
7	VPack	FPM	

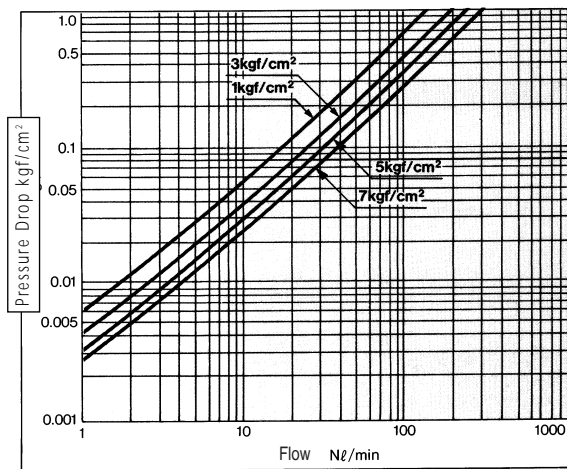


FLOW CHART
SFA100

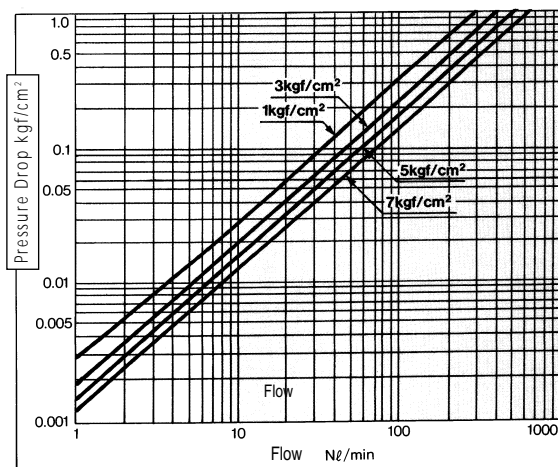
FLOW DATA COMPILED USING AIR AT 20°C



FLOW CHART
SFA200



FLOW CHART
SFA300



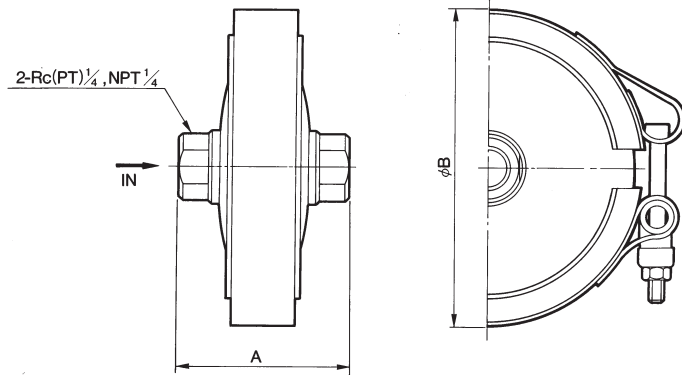
SEE INSIDE FRONT COVER FOR
DETAILS OF YOUR LOCAL SALES OFFICE



FOR FURTHER TECHNICAL
DETAILS ON THIS
PRODUCT CONTACT
YOUR NEAREST REGIONAL
CENTRE

DIMENSIONS

SFA100, 101, SFA200, 201, SFA300, 301



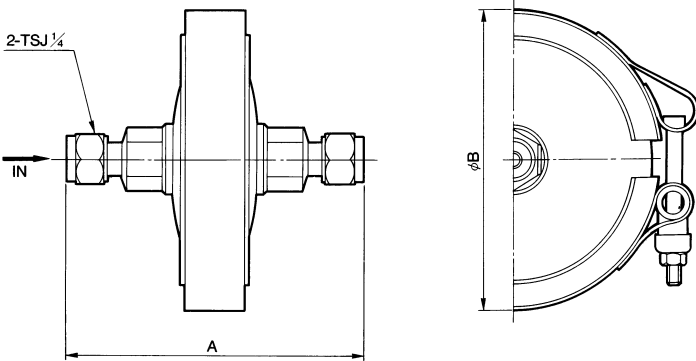
DIMENSIONS

SFA100, 101, SFA200, 201, SFA300, 301

Type	Port Size	A	ØB
SFA100-02	Rc(PT)1/4	46	76
SFA101-02	NPT1/4	46	76
SFA200-02	Rc(PT)1/4	51	96
SFA201-02	NPT1/4	51	96
SFA300-02	Rc(PT)1/4	59	120
SFA301-02	NPT1/4	59	120

DIMENSIONS

SFA102, SFA202, SFA302



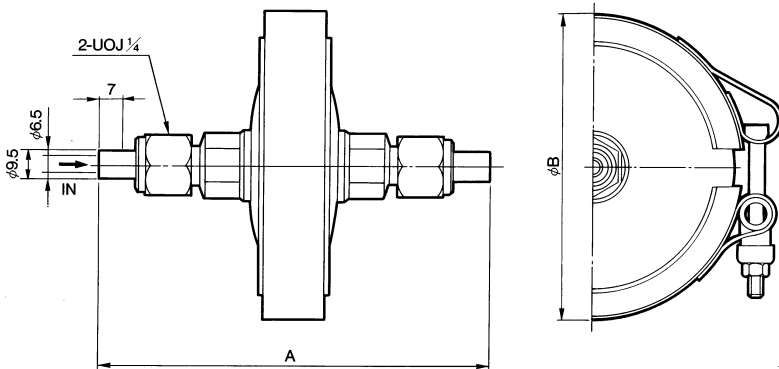
DIMENSIONS

SFA102, SFA202, SFA302

Type	Port Size	A	ØB
SFA102-02	Tube Swage Joint	89	76
SFA202-02		93	96
SFA302-02		101	120

DIMENSIONS

SFA103, SFA203, SFA303



DIMENSIONS

SFA103, SFA203, SFA303

Type	Port Size	A	ØB
SFA103-02	Union	117	76
SFA203-02	UOJ1/4 O-Ring Joint	122	96
SFA303-02		130	120



FOR FURTHER TECHNICAL
DETAILS ON THIS
PRODUCT CONTACT
YOUR NEAREST REGIONAL
CENTRE